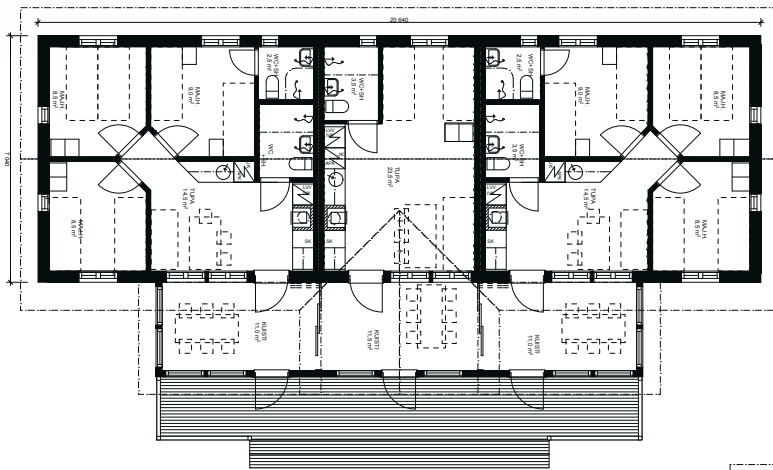
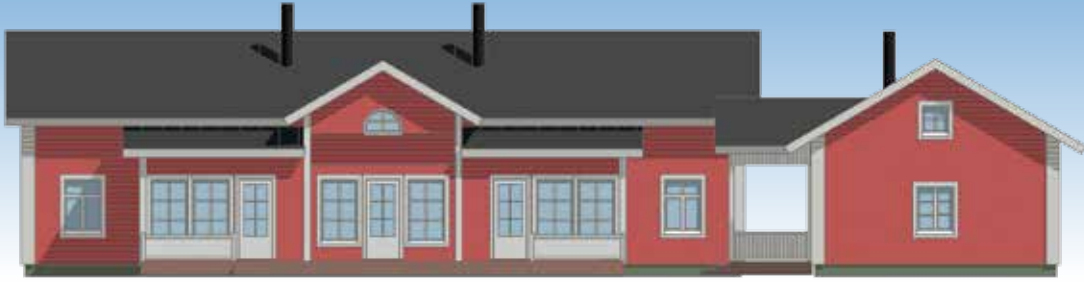


Torne River Kukkola Chalets

New Apartments 2014



Semi-detached cabins

from 2 to 6 persons

5 x 27 m²

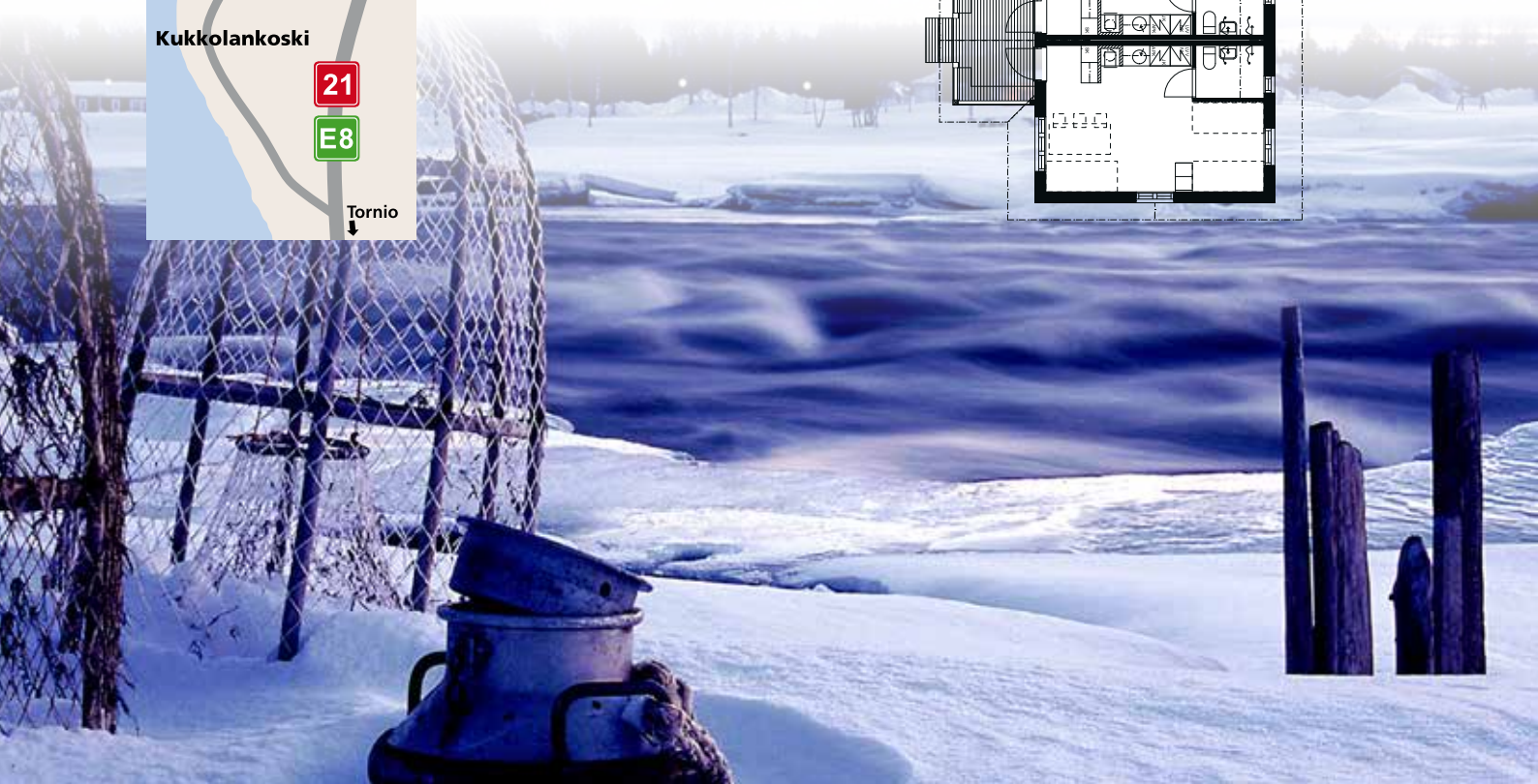
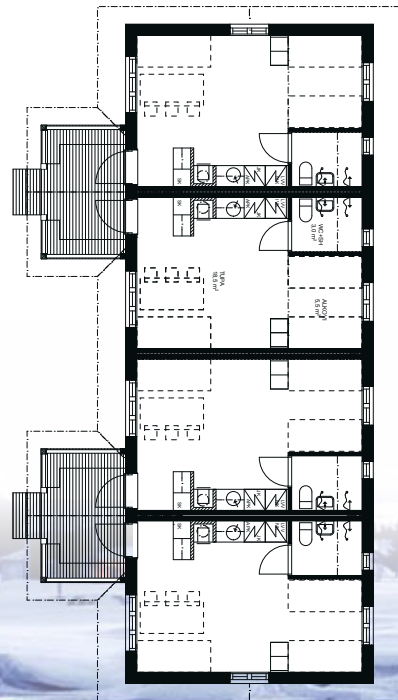
2 x 48 m²



High standard chalet. Chalet stands on shore in own quiet location.

Equipment

Electric light, electric fridge, electric heating, hot/cold water, shower, toilet, microwave oven, television. Chalet rent includes bed linen.





Torne River Kukkola Chalets

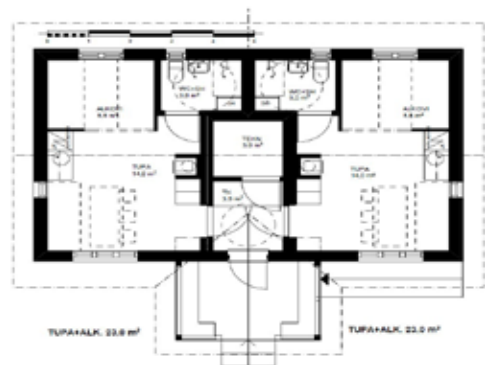
High standard chalet. Chalet stands on shore in own quiet location. However, the services of Nordic Safaris - Pohjolan Pirtti ("Nordic House") safarihouse can be enjoyed by separate arrangement (available according to booking situation); these services include meals at the house, breakfast delivered to the chalet, Pohjolan Pirtti's luxurious river shore sauna for e.g. conferences or family celebrations. Nordic Safaris also offers activities and events which can be enjoyed for an additional charge.

Semi-detached cabins

from 2 to 8 persons (24 m² / 48 m²)

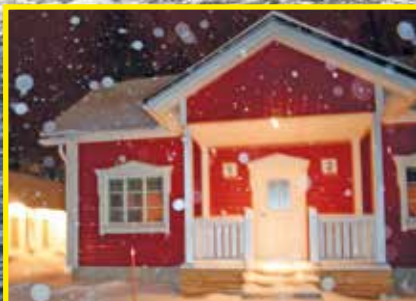
Equipment

Electric light, electric fridge, electric heating, hot/cold water, shower, toilet, microwave oven, television. Chalet rent includes bed linen.



Distances

Tornio city 15 km, Haparanda city (Sweden) 17 km, Tornio railway station 15 km, Tornio busstation 15 km, Kemi-Tornio airport 35 km, bus stop 600 m, shop 9 km, neighbour 100 m, crosscountry skiing track 250 m, Green Zone Golf Course 17 km



Pohjolan Safarit - Nordic Safaris • Way out Activities
Nordic House and Siikakartano • Siika "estate" The spirit of Sea-Lapland
The Torne River Cottages
tel +358 40 755 1858 • info@nordicsafaris.com
www.nordicsafaris.com